

New Strawn District Fisheries News

Summer 2015

Woodson Wildlife Area, 738 Fegan Rd., Toronto, KS 66777
www.kdwpt.state.ks.us justin.morrison@ksoutdoors.com Office: 620-637-2748

Georgia Cube Fish Habitat

IN THIS EDITION

1. Georgia Cube
2. South Owl Map
3. Woodson Habitat Structures & Map
4. 2015 Basscast
5. New Feeder
6. Blue Cat Electrofishing

Kansas Dept. of Wildlife, Parks and Tourism, with the help of the inmate program at El Dorado Correctional Facility, is producing PVC habitat structures for many lakes in the state. The inmates pre-cut all of the materials and prepare the structures for quick assembly. One structure can be assembled in about five minutes and should last a lifetime. In the past KDWPT biologists have used cedar trees for fish attractors because of the availability and bushy shape. But these cedar trees can break down significantly in a just a few years requiring more trees and more man hours to maintain the brush piles. These PVC habitat structures should reduce the man hours needed to provide adequate habitat for your local lakes and work just as good as a cedar tree for attracting fish.

South Owl Lake in Yates Center is the first lake in my district to get the Georgia Cube structures. South Owl is a 150-acre CFAP lake just outside the city limits of Yates Center. It provides good fishing for crappie, catfish, and bass. But there is one thing this lake is lacking and that is habitat diversity. This lake has some decent vegetative habitat in the shallow waters, but very little habitat in the deeper water. We placed 11 Georgia Cubes in the lake around topography changes to maximize the attraction to the fish. We sank two cubes at four different locations and three cubes at one location. Below is a picture of the cubes.



South Owl Georgia Cube Locations



GPS Coordinates for Habitat Cubes at South Owl

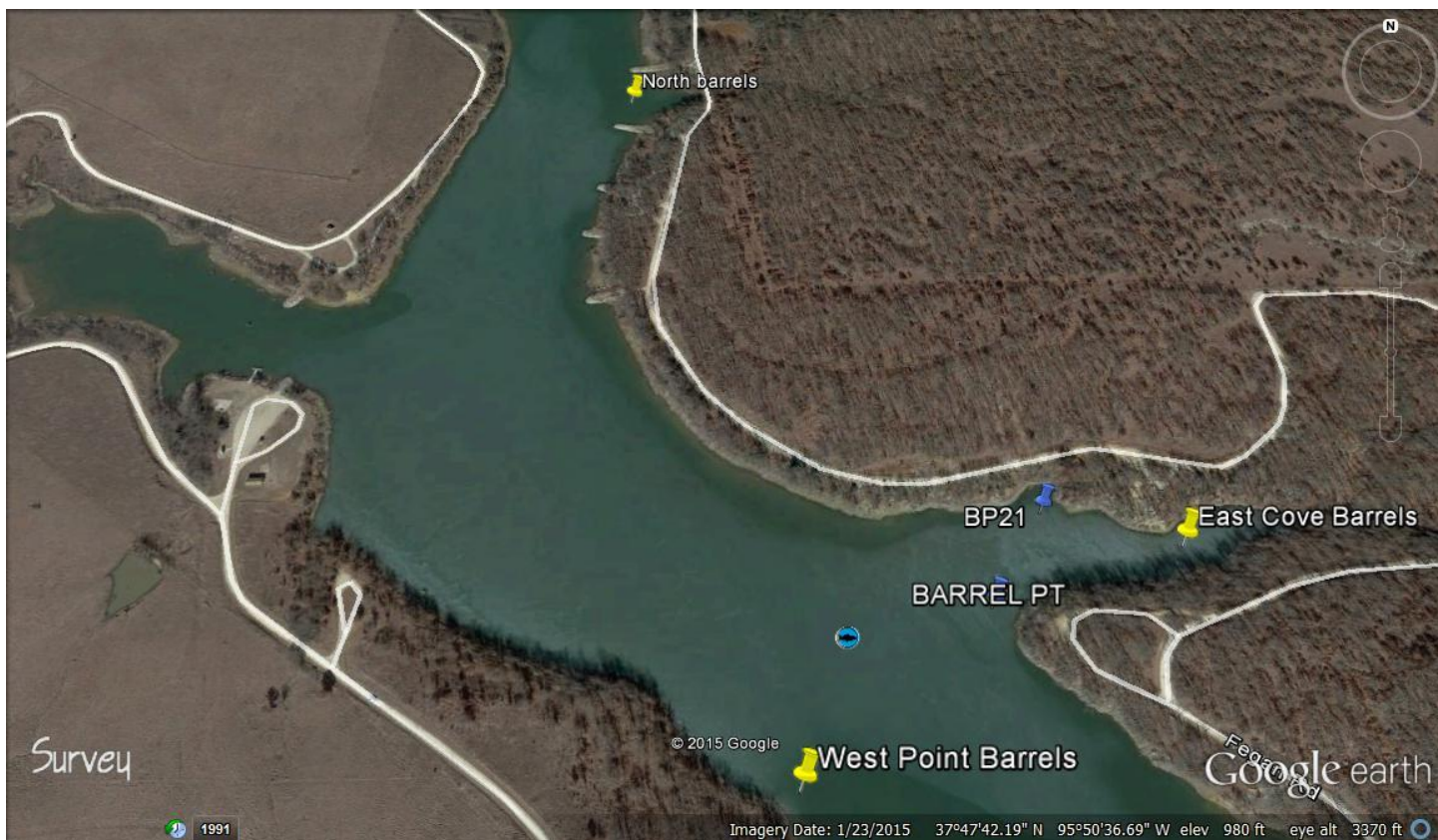
Tree Point	Triple Cube	N. Side of Spillway
37° 51'56.46" N	37° 51'55.68" N	37° 51'55.44" N
95° 44'44.52"W	95° 44'52.50"W	95° 44'41.34" W
S. Side of Spillway	South Bank	
37° 51'54.30" N	37° 51'54.12"N	
95° 44'41.82" W	95° 44'43.38" W	

I'm planning to add more to the lake as they come available and will keep this map updated with new additions.

Woodson State Fishing Lake Habitat Structures

Before the Georgia Cubes went into production this year, I made my own PVC structures out of 55 gallon recycled plastic drums we had at our office. I ended up with 15 total structures, 10 of the "porcupine style" and five of the "flower style". After I sank these structures in Woodson State Fishing Lake, I went back over them to see what they looked like on the fish finder. Since I cut the lid off of the barrels it was hard to pick them up with traditional sonar, but if I used the down imaging sonar I could see them well. The map and corresponding locations is on the next page.





Woodson State Fishing Lake Habitat Structures			
West Point Barrels	Barrel Point	Bp21	East Cove Barrels
37° 47' 33.00"N	37° 47' 37.27"N	37° 47' 39.78"N	37° 47' 38.70"N
95° 50' 34.86"W	95° 50' 29.19"W	95° 50' 27.38"W	95° 50' 23.70"W
North Barrels			
37° 47' 54.90"N			
95° 50' 40.38"W			

2015 Basscast - A look at your favorite bass fishing lakes.

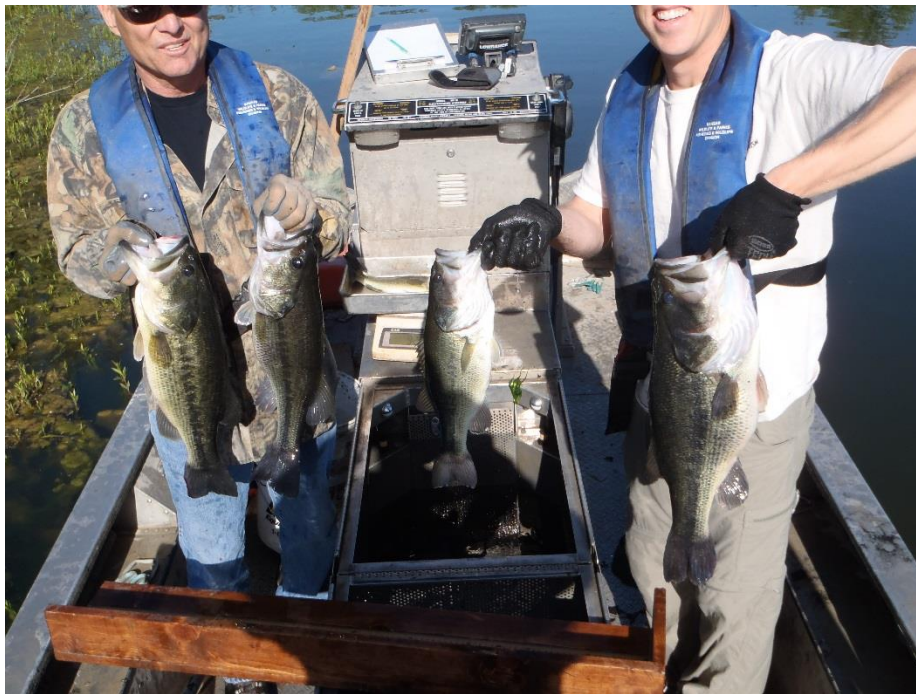
2015 Spring Electrofishing Results							
Lake	Total	Stock CPUE	RSD S-Q (8-12")	RSD Q-P (12-15")	RSD P-M (15-20")	RSD M-T(20-25")	Biggest Fish
Gridley City Lake	177	197.7	48.84	36.05	15.12		2.67
New Strawn City Lake	90	182.22	13.41	51.22	34.15	1.22	4.96
Garnett North Lake	225	125.19	40.24	54.44	5.33		3.02
Yates Center City Lake	228	125.16	37.63	45.88	16.49		3.59
Garnett South Lake	68	111.11	30	28.3	38.3	3.3	5.75
Y.C. South Owl	167	97.76	61.83	24.43	13.74		4.1
Wolf Creek	147	75.82	22.46	23.19	49.28	5.07	2.58
Garnett Cedar Creek	71	71.91	32.81	21.88	42.19	3.13	5.25
Woodson State Lake	133	45.28	54.17	28.13	15.63	2.08	6
Lebo City Lake	62	41.86	47.22	8.33	44.44		3.04

The highlighted data is all smallmouth bass and does not correspond to the same RSD values as largemouth bass. RSD values for smallmouth are as follows: RSD S-Q (7"-11"), RSD Q-P (11"-14"), RSD P-M (14"-17"), and RSD M-T (17"-20").

Whether you are looking for quality over quantity or vice versa, you should be able to find a lake in this district that meets your bass fishing dreams. Spring sampling efforts this year were not too far off from the previous year. Garnett's South Lake and Cedar Creek Lake are still producing excellent bass populations that provide a good chance of catching bass over 5 pounds. The Garnett North Lake is still dominated by 8- to 15-inch bass, but can provide an excellent opportunities for a youngsters to catch their first largemouth. Notable increases in the catch rate were seen at Gridley City Lake, Woodson State Lake, and Yates Center South Owl. Gridley City Lake is still a young population after the renovation in 2011, but the bass are coming on strong and will provide some excellent fishing in the next couple of years. It was good to see the increased catch rate at Woodson State Lake as the previous years' have been extremely low. Woodson historically has been a good bass lake and it looks like it is on the right track to produce the same quality fishery. The largest fish of the spring sample came out of Woodson. Yates Center South Owl saw an enormous increase in the number of stock length fish this year. This large year class will provide some quality angling in the next couple of years. Wolf Creek stands alone in my district as the only lake that provides an excellent smallmouth fishery. The stock CPUE is highest in the state, and the chances of catching a 15-inch or larger fish are pretty good. Bottom line, the New Strawn District is loaded with good bass fishing lakes so get out there and enjoy them. Below are some pictures of the electrofishing sample.



Garnett South Lake - 5.75 lbs.



More lunkers at Garnett South Lake



Woodson State Lake - 6 lbs.



New Strawn City Lake - 4.96 lbs.



Garnett North Lake - 2 10 lb. wipers

New Feeder at Woodson Rearing Pond



As part of my duties in this district, I manage the Woodson Rearing Pond, which produces around 80,000 channel catfish intermediates (8- to 12-inch fish) each year. These fish are harvested in late October and stocked throughout eastern Kansas. In the past, I fed the fish one 50-pound bag of feed at a time, which doesn't sound too bad until you see the feed schedule that calls for 600 pounds per day and then it is a different story. This feeder will allow me to spread the feed around the whole pond. By spreading the feed out over a larger area, this spreads the fish out and allows a better opportunity for each fish to get feed. The end result should be more even size distribution and better quality fish at harvest time.

Blue Catfish Electrofishing

During July or August, many biologists sample blue catfish in their reservoirs using the electrofishing boats. Wolf Creek is my only lake that has a well-established blue catfish population. It is not as prolific as the population at Milford Reservoir, but does seem to have some nice fish available. This is my third year using an electrofishing boat for blue cats, and I'm still learning where to look for these fish. This year's sample was better than last as we caught 12 fish instead of only 3. The biggest fish of the sample was 23 pounds. However, I was not satisfied with this sample and knew I was missing some key spots on the lake that should hold fish. So I went out again and just looked at some different spots that I haven't sampled, and wouldn't you know there were the blue cats. We had 20-30 fish up at the surface at one time, some of these fish were really good size. The only problem was I didn't have any chase boats with me to drive around and net the fish. Most of the time the electrofishing boat can't get close enough to the fish to net them so chase boats are required for sampling blue cats. However, this time I got lucky and was able to get a couple of real nice ones in the boat. The biggest we was 31 pounds and the next largest was 27 pounds. All of the blues we sampled had a belly full of zebra mussels. It is highly unlikely these fish will ever control the zebra mussels, but it is encouraging to see they do eat them.





FISH KANSAS!

Questions or Comments?

Please contact Justin Morrison

Office: (620) 637-2748

E-Mail: justin.morrison@ksoutdoors.com