

**1973** - Federal Endangered Species Act passed by Congress

**1974** - First modern hunting seasons on antelope and turkey

**1974** - Sandhills State Park authorized by Kansas Legislature

**1975** - Clinton State Park, Eisenhower State Park (originally named Melvern State Park) authorized by Kansas Legislature

**1975** - Kansas Nongame and Endangered Species Act broadens agency responsibility to all vertebrate and non-vertebrate wildlife species

**1979** - El Dorado State Park authorized by Kansas Legislature

**1980** - Chickadee Checkoff program begins

**1984** - Milford Fish Hatchery completed

**1987** - Gov. Mike Hayden signs executive order merging State Parks and Resources Authority and Kansas Fish and Game Commission to form Kansas Department of Wildlife and Parks

**1987** - Kansas Waterfowl Habitat stamp created

**1988** - Hillsdale State Park authorized by Kansas Legislature

**1994** - Prairie Spirit Rail Trail authorized by Kansas Legislature

**1994** - First Becoming an Outdoors-Woman workshop at Rock Springs 4-H Center

**1995** - Trout program initiated

**1995** - Walk-In Hunting Areas pilot program initiated

**1996** - Walk-In Hunting Areas program implemented statewide.

**1996** - Department website created

**1999** - Department debuts online license sales system

**2000** - Outdoor Kansas Kids program begins

**2004** - State Park No. 24 authorized by Kansas Legislature

## CONTACTS OFFICES

Office of the Secretary.....(785) 296-2281  
 Pratt Operations .....(620) 672-5911  
 Region 1 Office .....(785) 628-8614  
 Region 2 Office .....(785) 273-6740  
 Region 3 Office .....(316) 683-8069  
 Chanute District .....(620) 431-0380  
 Dodge City District .....(620) 227-8609  
 Kansas City District .....(913) 422-1314

## STATE PARKS

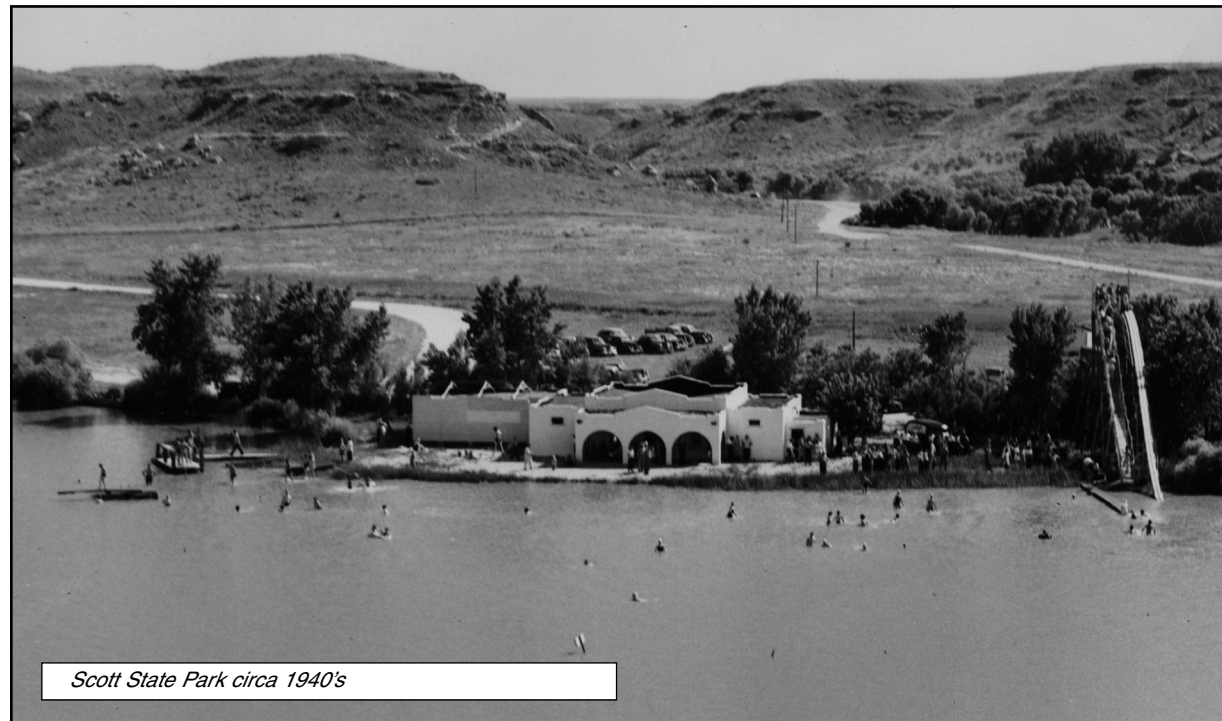
Cedar Bluff SP.....(785) 726-3212  
 Cheney SP.....(316) 542-3664  
 Clinton SP.....(785) 842-8562  
 Crawford SP.....(620) 362-3671  
 Cross Timbers SP.....(620) 637-2213  
 Eisenhower SP.....(785) 528-4102  
 El Dorado SP.....(316) 321-7180  
 Elk City SP.....(620) 331-6295  
 Fall River SP.....(620) 637-2213  
 Glen Elder SP.....(785) 545-3345  
 Hillsdale SP.....(913) 783-4507  
 Kanopolis/Mushroom Rock SP..(785) 546-2565  
 Kaw River SP.....(785) 273-6740  
 Lovewell SP.....(785) 753-4971  
 Meade SP.....(620) 873-2572  
 Milford SP.....(785) 238-3014  
 Perry SP.....(785) 246-3449  
 Pomona SP.....(785) 828-4933  
 Prairie Dog SP.....(785) 877-2953  
 Prairie Spirit Trail .....(785) 448-2627  
 Sand Hills SP.....(620) 665-6248  
 Scott SP.....(620) 872-2061  
 Tuttle Creek SP.....(785) 539-7941  
 Webster SP.....(785) 425-6775  
 Wilson SP.....(785) 658-2465

Equal opportunity to participate in and benefit from programs described herein is available to all individuals without regard to race, color, national origin, sex, age, disability, sexual orientation, gender identity, political affiliation, and military or veteran status. Complaints of discrimination should be sent to Office of the Secretary, Kansas Department of Wildlife, Parks and Tourism, 1020 S Kansas Ave., Topeka, KS 66612-1327. 05/17

# KANSAS DEPARTMENT OF WILDLIFE, PARKS AND TOURISM

---

## HISTORY TIMELINE



Scott State Park circa 1940's



KDWPT, Operations Office  
 512 SE 25th Ave.  
 Pratt, KS 67124  
 (620) 672-5911

Department Website:  
[www.ksoutdoors.com](http://www.ksoutdoors.com)

*Pratt hatchery and headquarters, 1912*



## HISTORY TIMELINE

**1905** – Fish and game laws organized under Kansas Fish and Game Department. Implementation of state law requiring license to hunt in Kansas. Land donated to the state by Pratt County Commission, for construction of a fish hatchery, was formally deeded to the state.

**1906** – Ring-necked pheasants stocked in Kansas

**1911** – State Fish and Game Department placed under supervision of the University of Kansas Board of Regents

**1924** – Bison herd started at Garden City, with assistance of American Bison Society

**1925** – Fish and Game Department reorganized as Kansas Forestry, Fish and Game Commission, comprising three members appointed by Governor

**1926** – First state fishing lakes built (Neosho and Meade)

**1927** – Reorganization of Commission. Agency given approval to organize a warden service, and pay wardens up to \$150 per month. Fishing licenses required of men 18 to 70.

**1928** – Game farms established at Meade County State Park and Crawford County State Park

**1933** – Civilian Conservation Corps begins building projects in Kansas

**1934** – Federal Migratory Bird Hunting Stamp Act (duck stamp act) passed by Congress

**1935** – Females from 18 to 70 first required to have a license to fish public waters

**1937** – Federal Aid in Wildlife Restoration law (Pittman-Robertson Act) enacted

**1938** – Publication “Outdoors with the Kansas Forestry, Fish and Game Commission” (predecessor to “Kansas Wildlife & Parks” magazine) began

**1939** – Three-member board was abolished by the legislature and replaced by a six-member bipartisan commission of sportsmen from throughout the state, appointed by the governor. The commission was given the responsibility to appoint a director, salary not to exceed \$3,300 per year. References changed from state game warden to director, and deputy game wardens to game protectors.

**1939** – Bureaus of Fisheries and Biological Survey are combined to create the U. S. Fish and Wildlife Service

**1939** – First land acquisition (Finney Game Refuge) using Pittman-Robertson federal aid funds

**1942** – Acquisition of land for Cheyenne Bottoms Wildlife Area begins

**1943** – Legislature gives full authority to Commission to set seasons and bag limits

**1948** – First federal reservoir in Kansas (Kanopolis) completed

**1949** – First walleye stocking in Kansas waters (Clark State Fishing Lake)

**1950** – Federal Aid in Sport Fisheries Restoration law (Dingell-Johnson Act) enacted

**1954** – Construction begins on Marais des Cygnes Wildlife Area

**1955** – State Legislature and Gov. Fred Hall create the State Park and Resources Authority

**1955** – First federal wildlife refuge created at Kirwin Reservoir

**1956** – First deer crossing sign erected, U. S. 36 in Cheyenne County

**1958** – Kanopolis State Park authorized by Kansas Legislature

**1958** – Cheyenne Bottoms Wildlife Area dedicated

**1960** – Fall River State Park, Cross Timbers State Park (originally named Toronto State Park) authorized by Kansas Legislature

**1960** – First Kansas boating laws enacted

**1961** – Tuttle Creek State Park authorized by Kansas Legislature

**1962** – Cedar Bluff State Park, Meade State Park, Prairie Dog State Park authorized by Kansas Legislature

**1963** – Pomona State Park authorized by Kansas Legislature

**1964** – Cheney State Park authorized by Kansas Legislature

**1965** – First archery and firearms deer season

**1965** – Crawford State Park, Lovewell State Park, Milford State Park, Scott State Park, Webster State Park authorized by Kansas Legislature

**1965** – U.S. Congress establishes Land and Water Conservation Fund

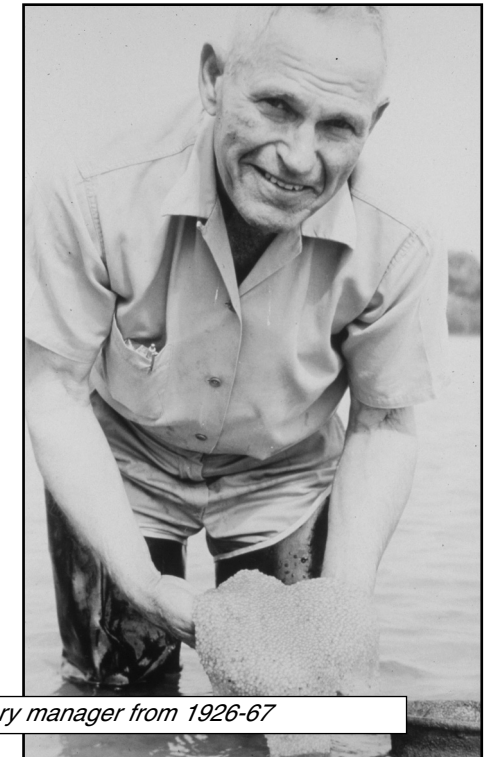
**1966** – Wilson State Park authorized by Kansas Legislature

**1967** – Elk City State Park, Perry State Park authorized by Kansas Legislature

**1969** – Glen Elder State Park authorized by Kansas Legislature

**1973** – Kansas Hunter Education Program started

**1973** – SASNAK (Surging Ahead for Skippers, Nimrods and Anglers of Kansas) program launched, substantially enhancing department’s biologist staff and establishing goals of increasing statewide sportfish catch by 50 percent, as well as doubling upland game harvest on public lands



*Seth Way, hatchery manager from 1926-67*