

2022-23 BOBCAT PELT TAGGING REPORT

PERFORMANCE REPORT STATEWIDE WILDLIFE RESEARCH AND SURVEYS

A Contribution of Pittman-Robertson Funds
Federal Aid in Wildlife Restoration

Grant W-39-R-29

Kansas Department of Wildlife and Parks

Brad Loveless
Secretary

Prepared by

Matt Peek
Furbearer Biologist

Jake George
Wildlife Division Director

Rich Schultheis
Wildlife Research Supervisor



July 2023



2022-23 BOBCAT PELT TAGGING REPORT

Prepared by Matt Peek, Furbearer Biologist



An enumeration of bobcats taken in Kansas has been conducted annually since 1978. This project is accomplished with tags provided by the U.S. Fish and Wildlife Service, Office of Management Authority, under the CITES Export Tag Program. In 2022, Kansas used yellow “KS BCAT” tags below number 82530. A total of 132 KDWP employees and offices were issued tags for the 2022-23 furharvesting season.

CITES tags were affixed to the pelts of 2569 bobcats taken in Kansas during the furharvesting season. This included 2 bobcats salvaged or confiscated by KDWP. This was an 8% increase in harvest from last season (2384) and 4% below the 5-year average. The number of bobcats pelt tagged annually since 1978 can be found in **Figure 1**.

Bobcats were taken in 95 of 105 counties. The number of bobcats taken in each county is presented in **Figure 2**. The estimated number of bobcats taken each day of the season is presented in **Figure 3**. Nine percent of the harvest (n=226) was after Feb. 15.

Bobcats may be taken using equipment authorized in K.A.R. 115-5-1 or salvaged during the harvest season. A total of 908 furharvesters took bobcats during the season. **Table 1** provides a breakdown of the methods furharvesters used to take bobcats and the primary species being pursued at the time the bobcat was taken. The total season bag of each furharvester is given in **Table 2**.

After the initial tag allocation, tag accountability was maintained via reports from KDWP employees or offices issued tags. After the season, each was responsible for inventorying unused tags and accounting for all tags they were issued. Unused tags were then destroyed or retained by each tagger, or returned to the Emporia office. Bobcats taken outside the furharvesting season (n=3) were not included in this analysis.

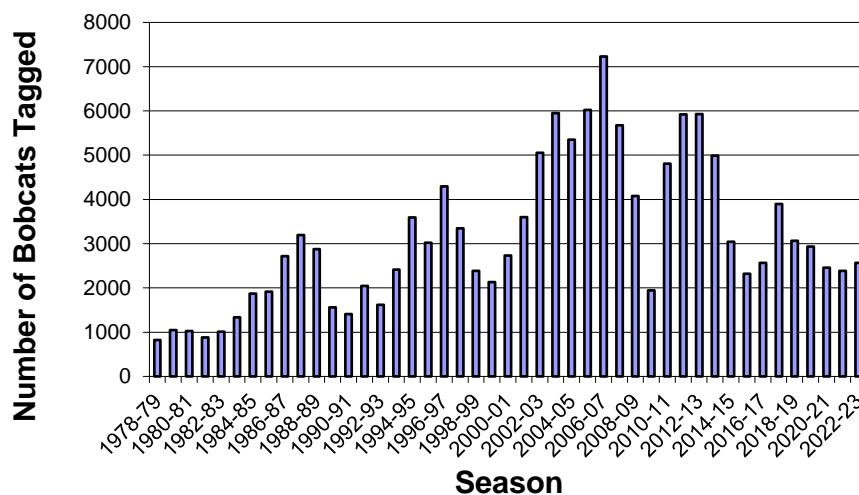


Figure 1. Number of bobcats pelt tagged annually since tagging began in 1978.

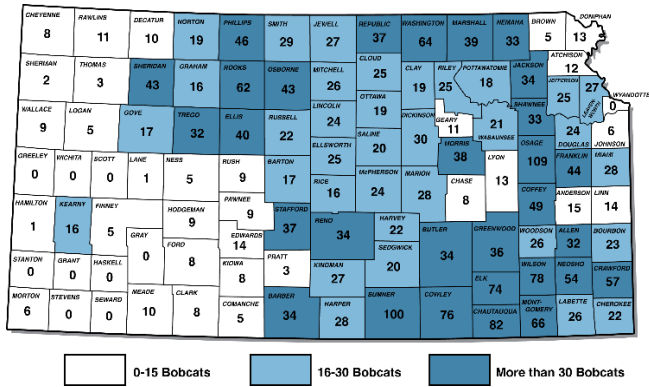


Figure 2. Number of bobcats taken per county during the 2022-23 furharvesting season in Kansas (n = 2569).

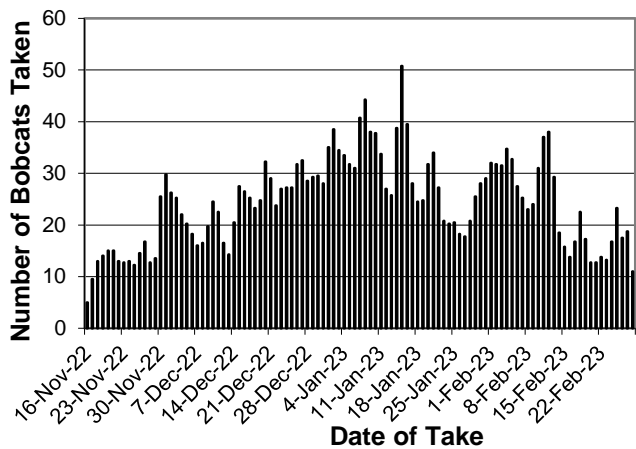


Figure 3. Estimated number of bobcats taken per day during the 2022-23 furharvesting season. (Data smoothed: $y_{(i)} = .5y_{(i)} + .25y_{(i+1)} + .25y_{(i-1)}$.)

Table 2. Total season bag of bobcats per furharvester during the 2022-23 season.

Total Season Bag	Number of Furharvesters	Percent of Furharvesters	Cumulative Percent of Furharvesters	Total number of Bobcats Taken	Percent of Bobcats Taken	Cumulative Percent of Bobcats Taken
1	461	50.8%	50.8%	461	17.9%	17.9%
2	180	19.8%	70.6%	360	14.0%	32.0%
3	96	10.6%	81.2%	288	11.2%	43.2%
4	47	5.2%	86.3%	188	7.3%	50.5%
5	29	3.2%	89.5%	145	5.6%	56.1%
6	21	2.3%	91.9%	126	4.9%	61.0%
7	9	1.0%	92.8%	63	2.5%	63.5%
8	11	1.2%	94.1%	88	3.4%	66.9%
9	10	1.1%	95.2%	90	3.5%	70.4%
10	11	1.2%	96.4%	110	4.3%	74.7%
11	6	0.7%	97.0%	66	2.6%	77.3%
12	6	0.7%	97.7%	72	2.8%	80.1%
13	3	0.3%	98.0%	39	1.5%	81.6%
14	1	0.1%	98.1%	14	0.5%	82.1%
15	3	0.3%	98.5%	45	1.8%	83.9%
17	2	0.2%	98.7%	34	1.3%	85.2%
20	1	0.1%	98.8%	20	0.8%	86.0%
21	2	0.2%	99.0%	42	1.6%	87.6%
22	3	0.3%	99.3%	66	2.6%	90.2%
26	1	0.1%	99.4%	26	1.0%	91.2%
31	1	0.1%	99.6%	31	1.2%	92.4%
33	1	0.1%	99.7%	33	1.3%	93.7%
34	1	0.1%	99.8%	34	1.3%	95.0%
52	1	0.1%	99.9%	52	2.0%	97.0%
76	1	0.1%	100.0%	76	3.0%	100.0%
Total	908			2569		

Table 1. Method of harvest and the primary species being pursued when bobcats were taken during the 2022-23 furharvesting season in Kansas.

Method of Harvest	Target Species													Total Number	Total Percent	
	Bobcat	Coyote	Raccoon	Skunk	Beaver	Fox	Unspecified Furbearers	Deer	Upland Birds	Goose	Unspecified or Other	Salvage				
Trapping																
Foothold Trap	845	233	3			1	3								1085	42.2
Bodygrip Trap	89	3	10	12	1										115	4.5
Cage Trap	288	3	10				1				3				305	11.9
Snare	130	38			1		7								176	6.9
SUBTOTAL	1352	277	23	12	2	1	11	0	0	0	3	0		1681	65.4	
Hunting																
Rifle	376	278	1					37			2				694	27.0
Shotgun	55	20							9	1					85	3.3
Archery	4							18							22	0.9
Hounds	1	1													2	0.1
Pistol	1														1	0.0
Unspecified "calling"	6														6	0.2
SUBTOTAL	443	299	1	0	0	0	0	55	9	1	2	0		810	31.5	
Other																
Salvage												75			75	2.9
Unspecified or Other	1										2				3	0.1
SUBTOTAL	1	0	0	0	0	0	0	0	0	0	2	75		78	3.0	
Total Number	1796	576	24	12	2	1	11	55	9	1	7	75		2569		
Total Percent	69.9	22.4	0.9	0.5	0.1	0.0	0.4	2.1	0.4	0.0	0.3	2.9		100.0		

EQUAL OPPORTUNITY STATEMENT

This program receives Federal financial assistance from the U.S. Fish and Wildlife Service. Under Title VI of the Civil Rights Act of 1964, Section 504 of the Rehabilitation Act of 1973, Title II of the Americans with Disabilities Act of 1990, the Age Discrimination Act of 1975, and Title IX of the Education Amendments of 1972, the U.S. Department of the Interior and its bureaus prohibit discrimination on the basis of race, color, national origin, age, disability or sex (in educational programs). If you believe that you have been discriminated against in any program, activity or facility, or if you desire further information, please write to: The U.S. Fish and Wildlife Service, Office of Diversity and Civil Rights Programs- External Programs, 4040 North Fairfax Drive, Suite 130, Arlington, VA 22203